



# Motor Carrier Program Overview

Office of Planning Briefing  
March 27<sup>th</sup>, 2009

***d.***

---

*District Department of Transportation*

# Agenda

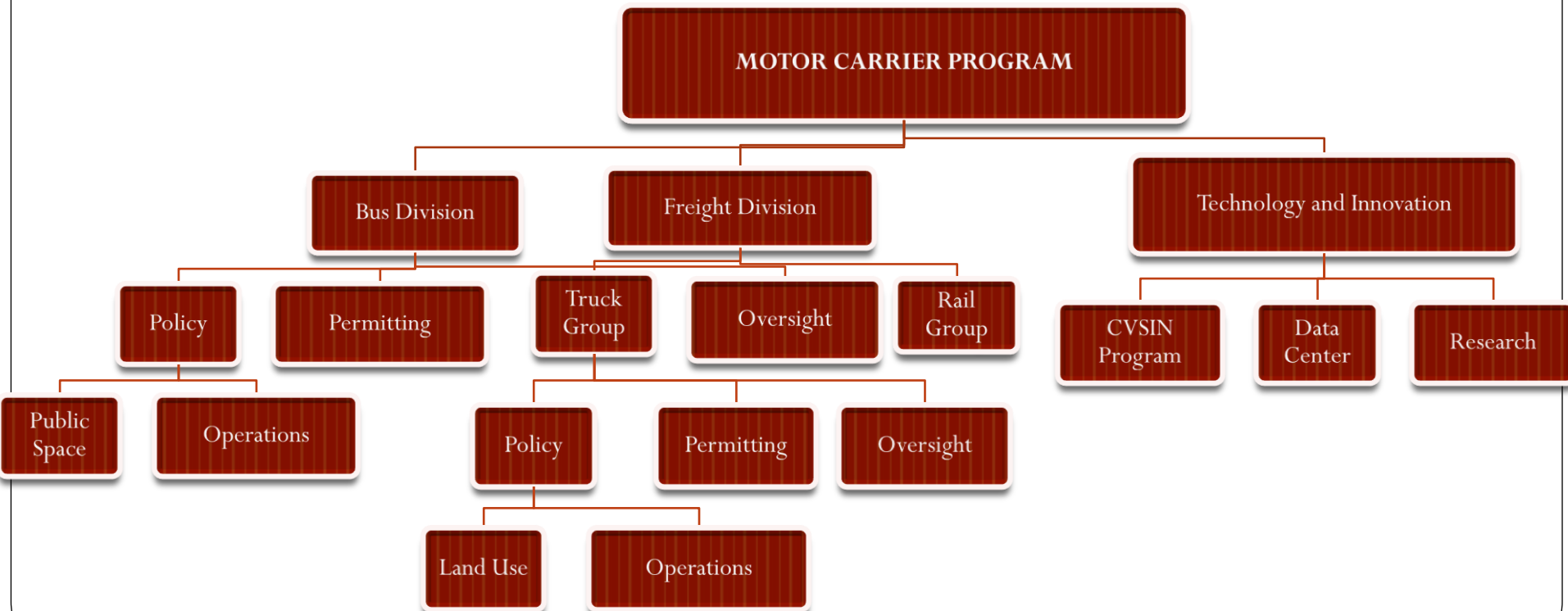
- Background
- Overview motor carrier trends in the District
- Program actions
- Questions

# Background

- *Motor Carrier Threat Assessment Study* and *Tour Bus Management Initiative* identified need
- 2 distinct groups defined as Motor Carriers; Trucks and Buses
- Lack of management has created inefficient business operations and adversely affected communities

# Motor Carrier Program

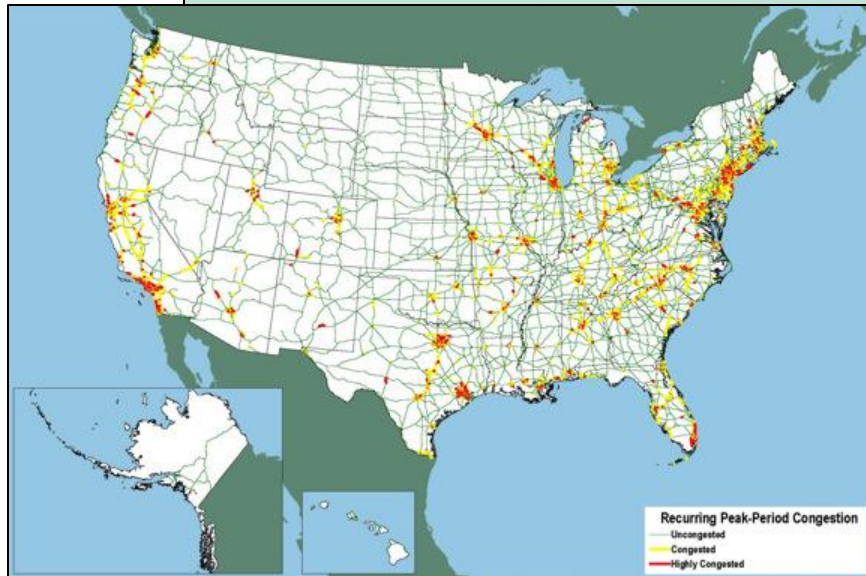
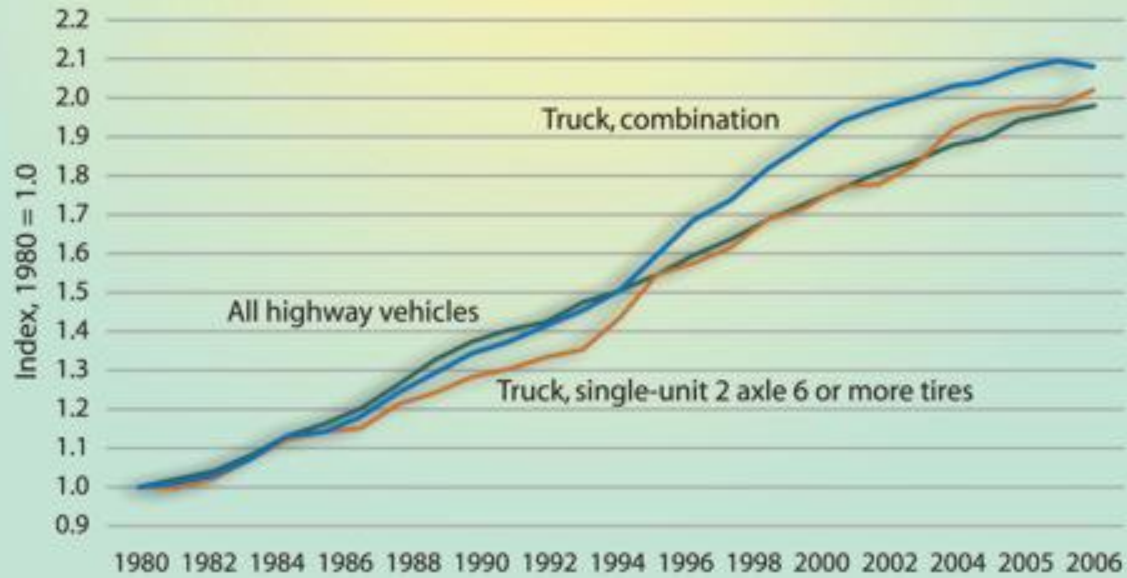
- The Motor Carrier Program (MCP) was established to address mobility, safety, security and environmental concerns with regards to freight and bus transportation.



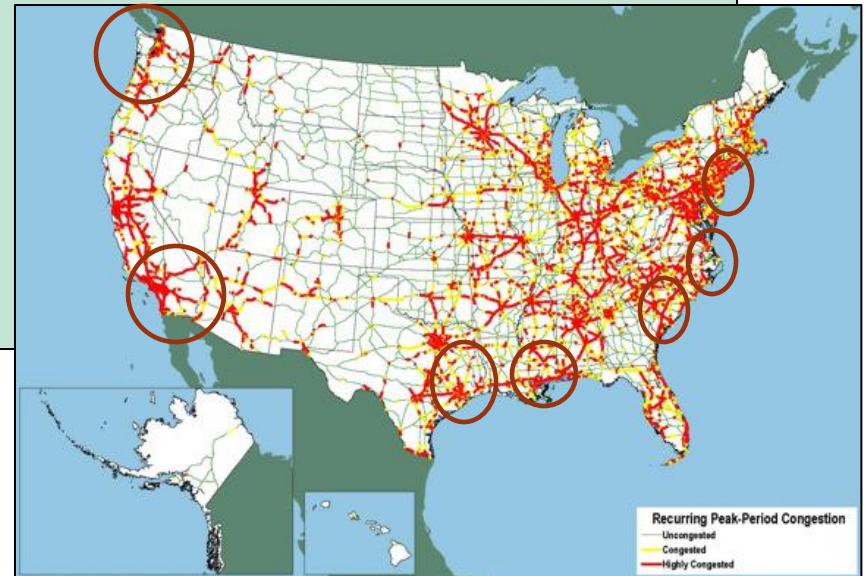
# Freight in the District

- Commodities are ultimately delivered by truck to the District
- Trucks comprise of approximately 6 percent of overall traffic
- The District is impacted by surrounding freight generators
- All classifications of vehicles enter the District; Program focuses on heavy trucks, delivery trucks, large combination vehicles etc.

# Highway Vehicle Miles Traveled by Trucks and All Vehicles: 1980-2006



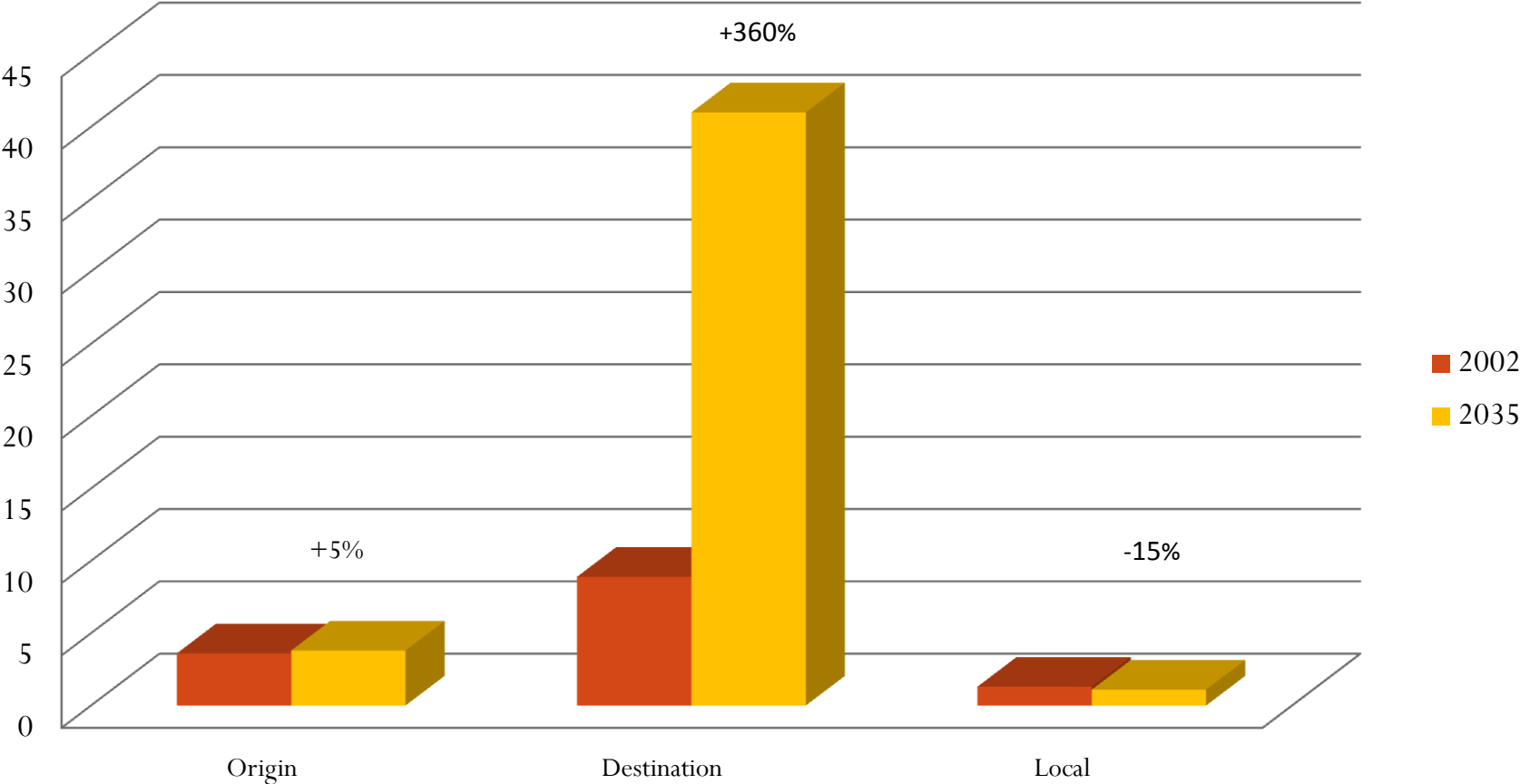
2002



2035

# Overview of Freight Movement in District

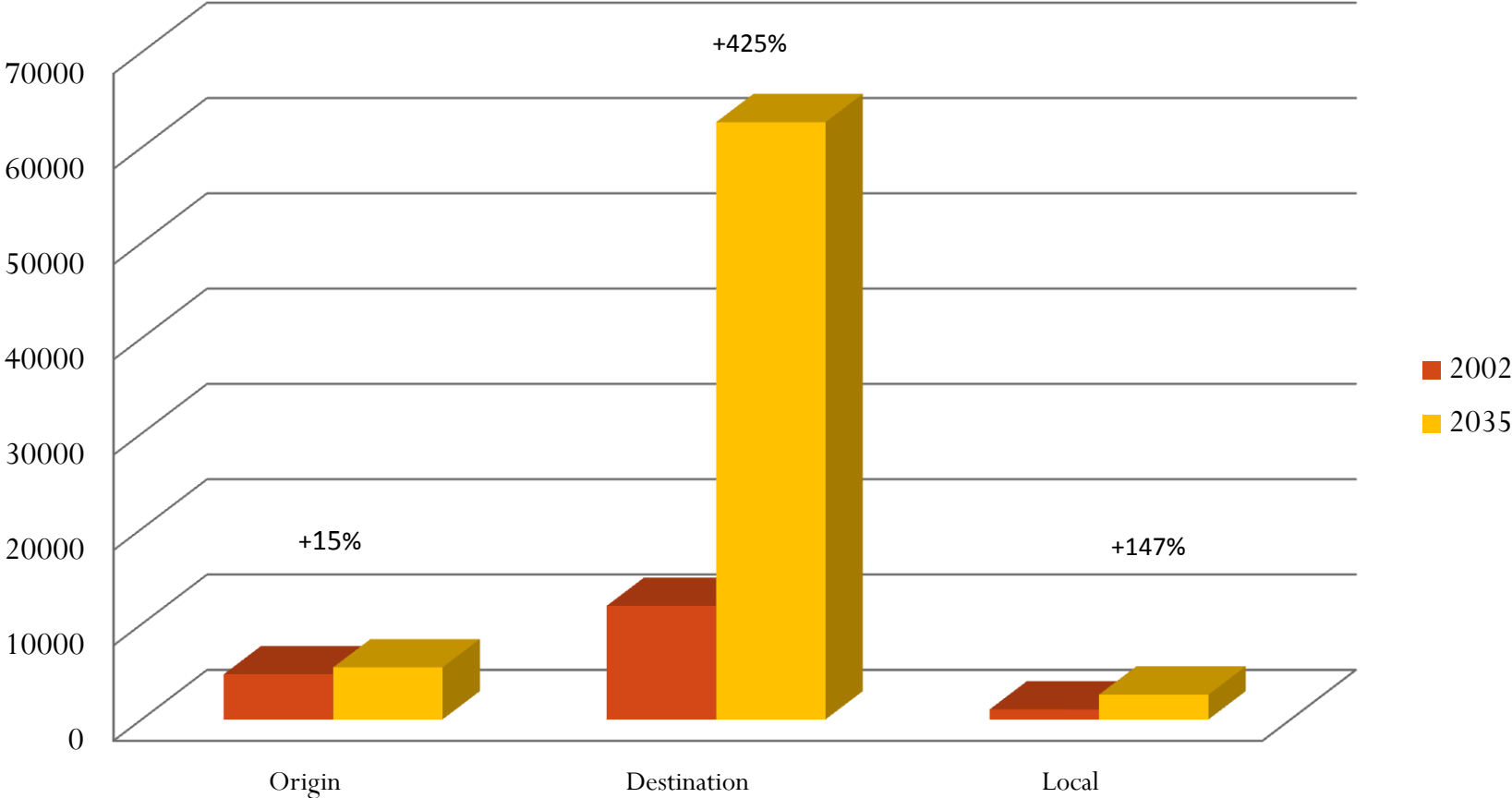
## Truck Volume (Tons) Washington, DC



*Top Trading Partners: Indiana, Maryland, Virginia, Pennsylvania*

# Overview of Freight Movement in District

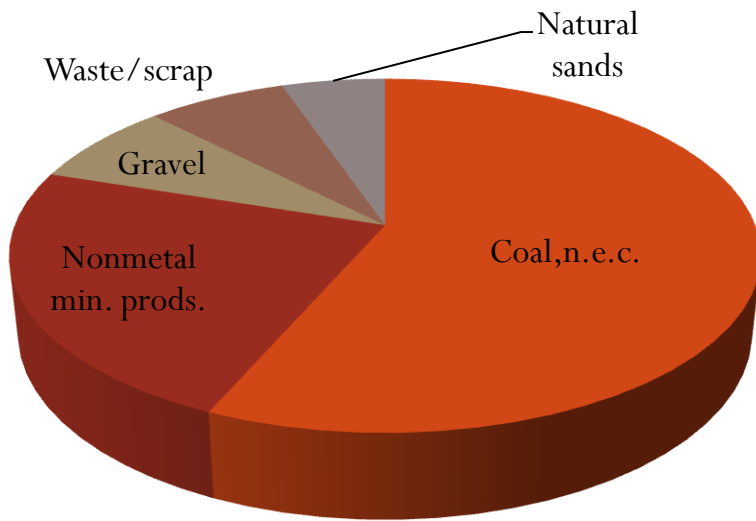
## Truck Volume (millions of dollars) Washington, DC



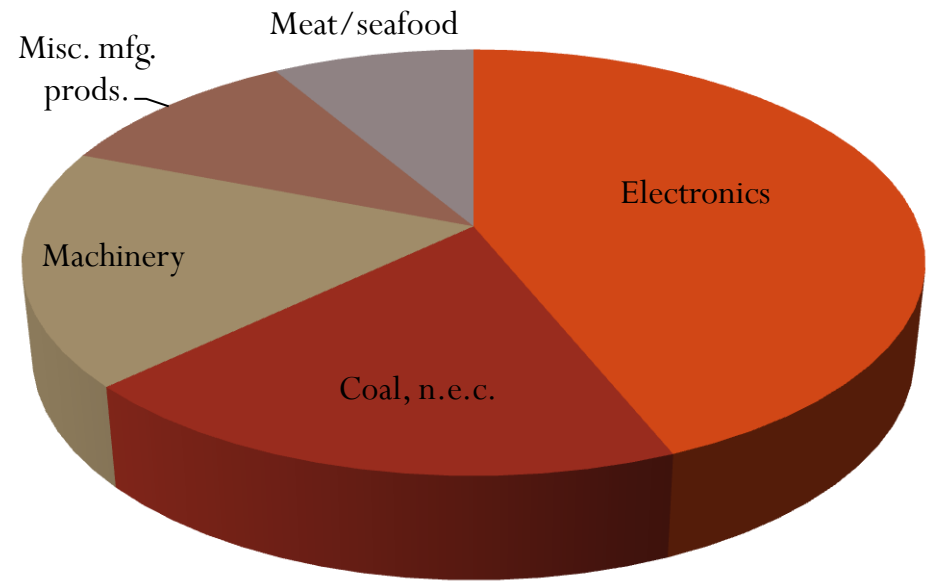
*Top Trading Partners: Indiana, Maryland, Virginia, Massachusetts*

# Top Commodities Terminating in the District

## Top Commodities, 2002



## Top Commodities, 2035

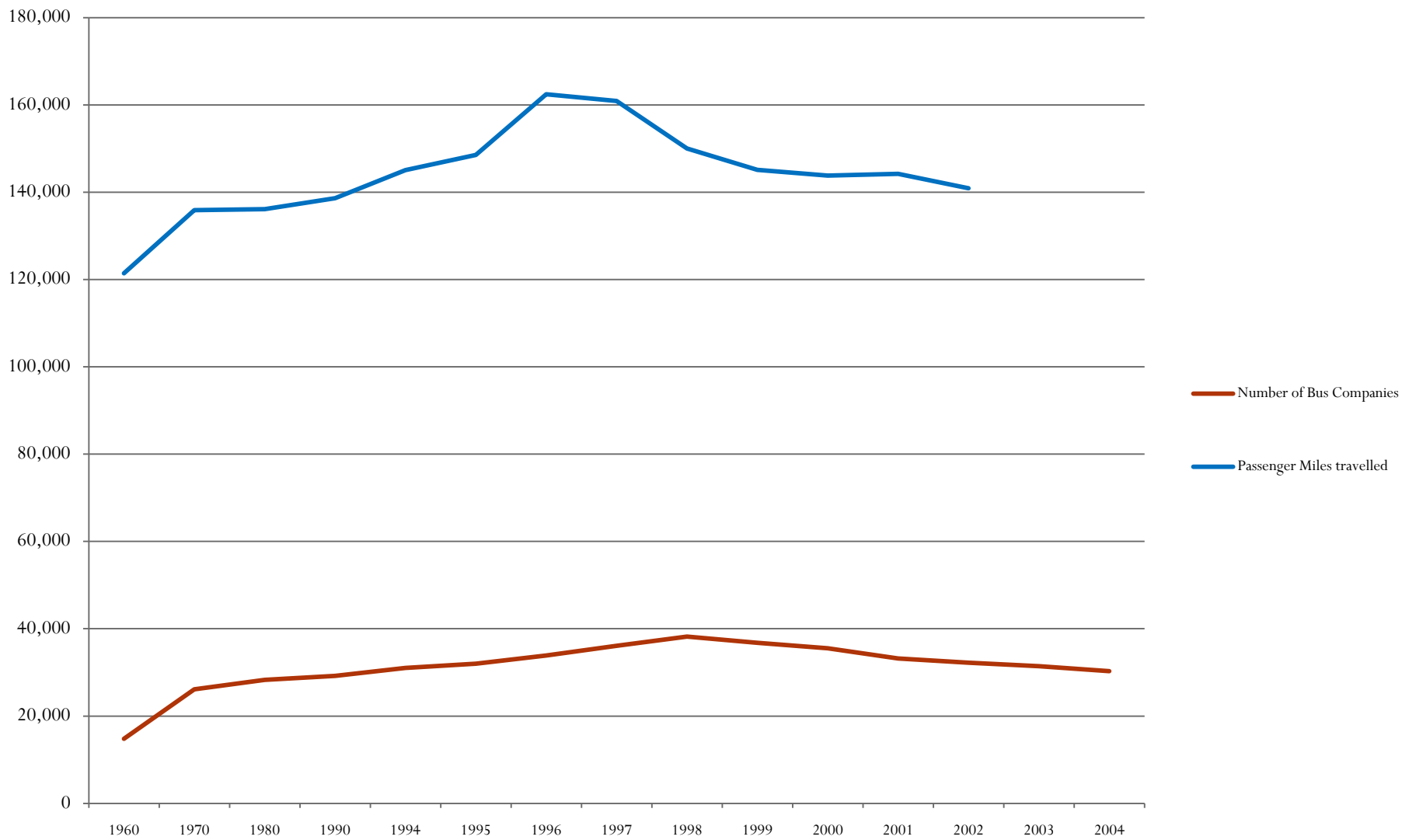


# Buses in the District

- Types of buses
  - Intercity
  - Commuter
  - Tour Buses
  - Charter Buses
- Buses carry 1 / 3 of all tourists; peak months are from April to August( over 1,000 buses per day)
- Buses come from across country, high portion from 500-1000 mile radius



# Trends in the Bus Industry, 1980-2006



# Challenges

- Public space usage for delivery vehicles
- Lack of bus parking/staging
- Congestion caused by large vehicle operations
- Lack of data (truck and bus)
- Enforcement
- Policy



# Actions

- Improve coordination and communication with industry and agencies
  - Bus and freight stakeholder groups
  - Web identity
- Develop truck and bus route system
- Improve data for planning purposes
  - Vehicle counts
  - Commercial Vehicle Information Systems Network (CVISN)
- Establish proper policy
  - Freight land use guidelines



# Questions?

Contact Information

Eulois Cleckley

District Department of Transportation

202-671-0682, [eulois.cleckley@dc.gov](mailto:eulois.cleckley@dc.gov)

Bus website: [www.bus.dc.gov](http://www.bus.dc.gov)